

## SA Rod end BEM16-60-502-DURBAL - BEM-16-60-502-L-DURBAL

<https://www.123bearing.co.uk/bearing-housing/rod-end/sa/bem-16-60-502-l-durbal>

### BEM16-60-502



male thread;  
maintenance free,  
adapter sizes  
according to  
DIN ISO 12240-4,  
series K

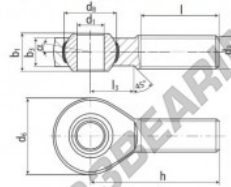
**DURBAL® heavy-duty rod ends  
with integral spherical  
plain bearing in stainless steel**

rod end housing:  
stainless steel 1.4301, rolled thread,  
surface with pickling treatment

joint ball:  
stainless steel, hardened and ground,  
surface superfinished

race:  
nylon / teflon / glass fibre compound

tolerances:  
see page 10



order number	type	measurements [mm]	weight	basic load rating
BEM 16 -60 -502	SA	d <sub>1</sub> 16, d <sub>2</sub> M 16, d <sub>3</sub> 42, d <sub>4</sub> 28,52, b <sub>1</sub> 21, b <sub>2</sub> 15,0	0,202	C 13760, C <sub>2</sub> 37700
		measurements [mm]		
	type	h, l, l <sub>1</sub>	weight [kg]	basic load rating dyn stat. C [N], C <sub>2</sub> [N]
BEM 16		66, 40, 22	0,202	13760, 37700

## PRODUCT FEATURES

Brand	DURBAL
N° Ean13	3663952509808
Inside diameter	16 mm
Outside diameter	42 mm
Thickness	21 mm
Type	SA
Weight	202 g
Thread	Left-hand thread
Lubrication	without
Packaging	1

[contact@123bearing.co.uk](mailto:contact@123bearing.co.uk)

02038 087 274

CRT4 de Lesquin 60 Rue Du Haut De Sainghin 59273 Fretin FRANCE