

SA Rod end BEM30-60-502-DURBAL - BEM30-60-502-DURBAL

<https://www.123bearing.co.uk/bearing-housing/rod-end/sa/bem30-60-502-durbal>

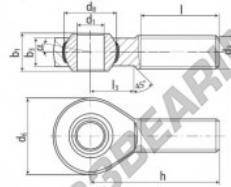
BEM30-60-502



male thread;
maintenance free,
adapter sizes
according to
DIN ISO 12240-4,
series K



**DURBAL® heavy-duty rod ends
with integral spherical
plain bearing in stainless steel**



rod end housing:
stainless steel 1.4301, rolled thread,
surface with pickling treatment

joint ball:
stainless steel, hardened and ground,
surface superfinished

race:
nylon / teflon / glass fibre compound

tolerances:
see page 10

order number	type	measurements [mm]	weight	basic load rating
BEM 30 -60 -502	SA	d ₁ 30, d ₂ M 30 x 2, d ₃ 70, b ₁ 50,75, b ₂ 37, b ₃ 25,0	1,015	C 33800, C ₂ 97100

PRODUCT FEATURES

Brand	DURBAL
N° Ean13	3663952509891
Inside diameter	30 mm
Outside diameter	70 mm
Thickness	37 mm
Type	SA
Weight	1015 g
Thread	Left-hand thread
Lubrication	without
Packaging	1

contact@123bearing.co.uk

02038 087 274

CRT4 de Lesquin 60 Rue Du Haut De Sainghin 59273 Fretin FRANCE