

## SA Rod end BEM06-60-501-DURBAL - BEM06-60-501-DURBAL

<https://www.123bearing.co.uk/bearing-housing/rod-end/sa/bem06-60-501-durbal>

### BEM06-60-501



male thread;  
maintenance free,  
adapter sizes  
according to  
DIN ISO 12240-4,  
series K

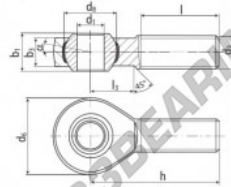
**DURBAL® heavy-duty rod ends  
with integral spherical  
plain bearing in stainless steel**

rod end housing:  
stainless steel 1.4301, rolled thread,  
surface with pickling treatment

joint ball:  
stainless steel, hardened and ground,  
surface superfinished

race:  
nylon / teflon / glass fibre compound

tolerances:  
see page 10



order number		measurements [mm]		measurements [mm]		measurements [mm]	
type	right-hand thread	d <sub>1</sub>	d <sub>2</sub>	d <sub>3</sub>	d <sub>4</sub>	h <sub>1</sub>	h <sub>2</sub>
BEM 06 -60	-501	6	M 6	20	12,65	9	6,75
measurements [mm]		weight		basic load rating		dyn. stat.	
type	h	l	l <sub>3</sub>	α <sub>1</sub> [°]	α <sub>2</sub> [°]	C	C <sub>0</sub>
BEM 06	36	22	12	13,0	6,5	0,020	2820
							4900

## PRODUCT FEATURES

Brand	DURBAL
N° Ean13	3663952509693
Inside diameter	6 mm
Inside diameter	0.236" inch
Outside diameter	20 mm
Outside diameter	0.787" inch
Thickness	9 mm
Thickness	0.354" inch
Type	SA
Weight	20 g
Thread	Right-hand thread
Lubrication	without
Packaging	1

[contact@123bearing.co.uk](mailto:contact@123bearing.co.uk)

02038 087 274

CRT4 de Lesquin 60 Rue Du Haut De Sainghin 59273 Fretin FRANCE