

## SI Rod end SI25-PK-DURBAL - SI25-PK-DURBAL

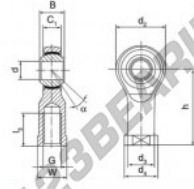
<https://www.123bearing.co.uk/bearing-housing/rod-end/si/si25-pk-durbal>

### SI25-PK



female thread;  
maintenance free,  
according to  
DIN ISO 12240-4,  
series K

Description: DIN ISO rod end K series. Sliding combination steel / bronze-PTFE composite.



Rod end body:  
surface case plated

Sliding combination:  
steel / bronze-PTFE composite

Inner ring:  
bearing steel hardened and ground

Outer ring:  
rod end body pressed around, outer race  
lined with bronze-PTFE composite

Lubrication:  
maintenance free

order number	measurement (mm)					
	d	G	B	C <sub>1</sub>	d <sub>2</sub>	d <sub>4</sub>
SI 25 PK	25	M 24 x 2	31	22,00	61	33,5

type	measurement (mm)				load rating C <sub>0</sub> (kN)	weight (kg)
	l <sub>1</sub> min	w	h	α [°]		
SI / SIL 25 PK	42	36	94	15	85,00	0,720

## PRODUCT FEATURES

Brand	DURBAL
N° Ean13	3663952492315
Inside diameter	25 mm
Outside diameter	61 mm
Thickness	31 mm
Type	SI
Weight	720 g
Thread	Right-hand thread
Lubrication	without
Packaging	1

[contact@123bearing.co.uk](mailto:contact@123bearing.co.uk)

02038 087 274

CRT4 de Lesquin 60 Rue Du Haut De Sainghin 59273 Fretin FRANCE