

SI Rod end SI16-PK-DURBAL - SI16-PK-DURBAL

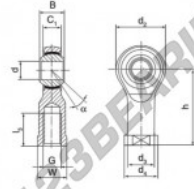
<https://www.123bearing.co.uk/bearing-housing/rod-end/si/si16-pk-durbal>

SI16-PK



female thread;
maintenance free,
according to
DIN ISO 12240-4,
series K

Description: DIN ISO rod end K series. Sliding combination steel / bronze-PTFE composite.



rod end body:
surface case plated

Sliding combination:
steel / bronze-PTFE composite

inner ring:
bearing steel hardened and ground

Outer ring:
rod end body pressed around, outer race
lined with bronze-PTFE composite

Lubrication:
maintenance free

order number	d	G	measurement (mm)				
right hand thread	B	C	d ₁	d ₂	d ₃	d ₄	
SI 16 PK	16	M 16	21	15,00	43	22,0	27

type	measurement (mm)				load rating C ₀ (kN)	weight (kg)
	l ₁ min	W	h	α [°]		
SI / SI16 PK	28	22	64	14	39,00	0,220

PRODUCT FEATURES

Brand	DURBAL
N° Ean13	3663952492087
Inside diameter	16 mm
Inside diameter	0.63" inch
Outside diameter	43 mm
Outside diameter	1.693" inch
Thickness	21 mm
Thickness	0.827" inch
Type	SI
Weight	220 g
Thread	Right-hand thread
Lubrication	without
Packaging	1

contact@123bearing.co.uk

02038 087 274

CRT4 de Lesquin 60 Rue Du Haut De Sainghin 59273 Fretin FRANCE